



RANA HOSPITAL

*Come with **PILES!** Go with **SMILES!***

Patient Information Leaflet

Anal Sphincter Exercises
for people with leakage
from the bowel

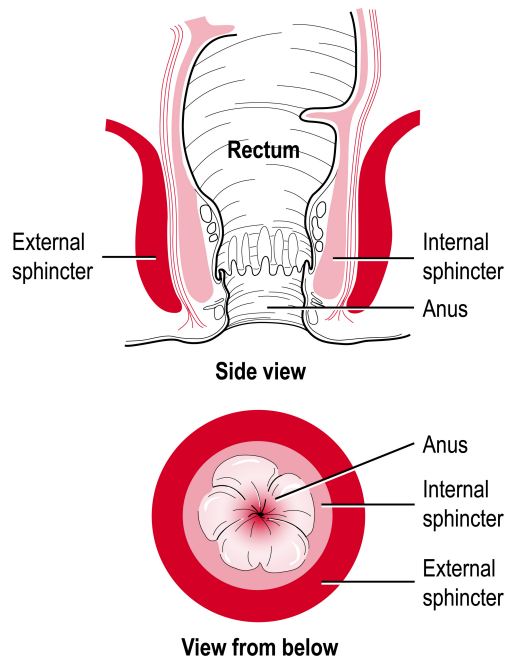
Anal Sphincter Exercises for people with leakage from the bowel

Introduction

Sphincter exercises can help you to improve leakage from the bowel. When done correctly, these exercises can build up and strengthen the muscles to help you to hold both gas and stool in the back passage.

Where are these muscles?

The back passage, or anus, has two rings of muscle around it (see diagram).

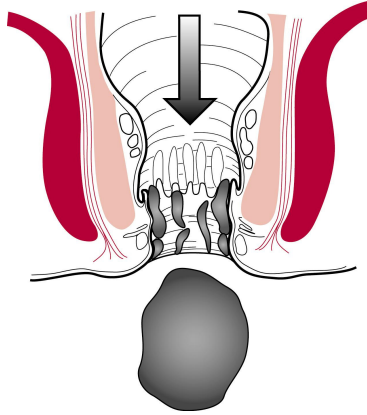


The inner ring is the *internal sphincter*, an involuntary muscle, which should be closed at all times, except when you are actually trying to open your bowels. This is normally automatic, you don't have to think about doing it.

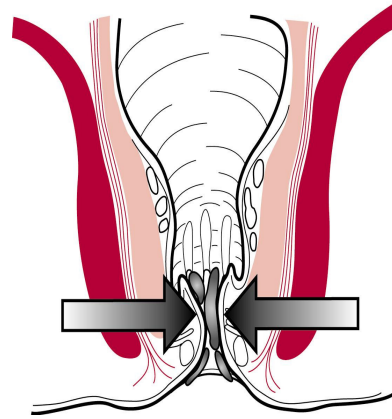
The outer ring of muscle is the *external sphincter*, which is a voluntary muscle which you can tighten up to close it more firmly if you have urgency or diarrhoea. Both muscles wrap right around the anus. Either or both of these sphincter muscles can become weak. This may be because of childbirth, constipation and straining or general wear and tear. Sometimes there is no obvious reason why. If you have weak muscles you may leak gas, liquid or solid stools.

When you pass a stool, there is usually some residue of the stool left behind in the anal canal (see diagram). Normally, the sphincter muscles “snap shut” after you have finished opening your bowels to close off the back passage. This squeezes out any residue. You can then wipe clean and there is no further leakage.

If the muscles are damaged or weak, they may not close immediately or completely after you have been to the toilet. This often makes it difficult to wipe clean, and you may find that you leak for a while after opening your bowels. This may be a small or a large amount and may last only a few minutes, or several hours. You may also find that you leak during strenuous exercise, lifting heavy weights or when you walk any distance. Some people find that a small amount of a stool is passed with wind.

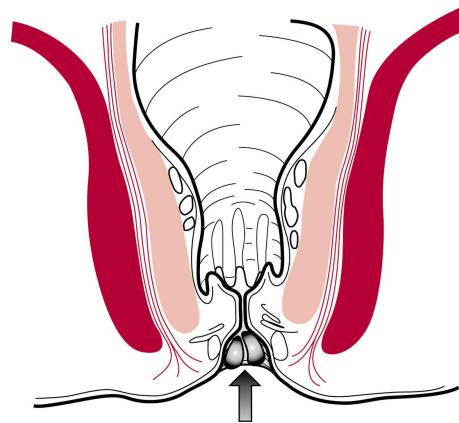


Passing a stool



Muscle does not close completely thus trapping the stool in the anus

Other people with weak muscles have a “funnel-shaped anus”. The weak muscle does not close completely at skin level and stool is trapped inside the anal opening. This cannot be removed easily just by wiping (see diagram)



Stools can be trapped in the “funnel”

How can exercises help?

The internal sphincter, which is most often the problem underlying leakage, cannot be strengthened by exercises. It is an involuntary muscle, which you cannot work just by willpower. It is the external sphincter muscle that you can exercise. The aim is to exercise this muscle enough to make it thicker and stronger so that it gives more support and may compress the internal muscle to prevent leakage. Speeding the reaction of this muscle may also help with wind control. Like any other muscle in the body, the more you use and exercise them, the stronger the sphincter muscle will be. However, this will be hard work and often takes several months to be effective.

Learning to do the exercises

It is important to learn to do the exercises in the right way, and to check from time to time that you are still doing them correctly.

Sit comfortably with your knees slightly apart. Now imagine that you are trying to stop yourself passing wind from the bowel. To do this you must squeeze the muscle around the back passage. Try squeezing and lifting that muscle as tightly as you can, as if you are really worried that you are about to leak. You should be able to feel the muscle move. Your buttocks, tummy and legs should not move at all. You should be aware of the skin around the back passage tightening and being pulled up and away from your chair. Really try to feel this. You are now exercising your anal sphincter. You should not need to hold your breath when you tighten the muscles!

Now imagine that the sphincter muscle is a lift. When you squeeze as tightly as you can your lift goes up to the 4th floor. But you cannot hold it there for very long, and it will not get you safely to the toilet as it will get tired very quickly. So now squeeze more gently, take your lift only up to the 2nd floor. Feel how much longer you can hold it than at the maximum squeeze.

Practising your exercises

1. Sit, stand or lie with your knees slightly apart. Tighten and pull up the sphincter muscles as tightly as you can. Hold tightened for at least five seconds, then relax for about 4 seconds.

Repeat five times. This will work on the *strength* of your muscles.

2. Next, pull the muscles up to about half of their maximum squeeze. See how long you can hold this for. Then relax for at least 10 seconds.

Repeat twice. This will work on the *endurance* or staying power of your muscles.

3. Pull up the muscles as quickly and tightly as you can and then relax and then pull up again, and see how many times you can do this before you get tired. Try for five quick pull-ups.

4. Do these exercises – five as hard as you can, two as long as you can and five quick pull-ups – four to six times every day.
5. As the muscles get stronger, you will find that you can hold for longer than five seconds, and that you can do more pull-ups each time without the muscle getting tired.
6. It takes time for exercise to make muscle stronger. You may need to exercise regularly for several months before the muscles gain their full strength.

Tips to help you

- At first it is probably a good idea to set aside some time for these exercises and really concentrate on getting them right. But quite soon they should become easy to do wherever you are. Nobody need know what you are doing!
- Get into the habit of doing your exercises with things you do regularly - every time you touch water if you are a housewife, every time you answer the phone if you are at the office whatever you do often.
- If you are unsure that you are exercising the right muscle, put a finger on the anus as you squeeze to check. You should feel a gentle lift and squeeze if you are exercising the right muscle. Or look at the area in a mirror - you should see the anus pucker up as you squeeze it.
- Use your muscles when you need them - pull up the muscles if you feel that you are about to leak. But remember that you cannot hold your tightest squeeze for very long, so you are better to use a gentler squeeze that you can hold for longer. Your control will gradually improve.
- Watch your weight - extra weight puts extra strain on your muscles.
- Once you have regained control of your bowel, don't forget your exercises. Continue to do them a few times each day to ensure that the problem does not come back.

Remember - you can do these exercises wherever you are - nobody need know what you are doing!

Other things that may help

- The better you empty your bowel on the toilet, the less there will be to leak. So, take your time on the toilet and do some exercises before you wipe. This may “milk out” any residue.
- Some people find that raising their feet on a footstool about 20-30cm high in front of the toilet helps to empty the bowel more completely.
- Reducing intake of high fibre cereals, caffeine and artificial sweeteners sometimes helps.

- If you have sore skin or itching, ask for advice on skin care.
- For some people leakage will resolve by using a suppository to clear the residue after a bowel action.

Do you have any questions?

This information sheet is designed to teach you how to exercise your anal sphincter muscle to improve your bowel control. If you have problems doing the exercises, or if you don't understand any part of this information sheet, ask your doctor, nurse or physiotherapist for help.

Please call Rana Hospital's clinical support staff at helpline: 098141-28667.



RANA HOSPITAL

Come with PILES! Go with SMILES!

Contact details

Rana Hospital, Sirhind, Punjab (India)

Phone: 01763-220067

Email: ranapiles001@yahoo.in

www.ranapileshospital.com

Author: Rana Hospital

Review date: May 2014

"